

# 6600 N. MILITARY TRAIL RETAIL AVAILABLE



6600 N. Military Trail | Boca Raton, FL

Jenny Schuemann | VP of Leasing, Senior Director  
jschuemann@pebbent.com | 954.790.1514





## PROPERTY HIGHLIGHTS

- Anchored by a new 37,000 SF Equinox Gym
- Strong daytime population with 1.6M workers in 30 miles as well as Lynn University and FAU
- Military Trail sees 39,500 vehicles per day
- Boca Raton has 5 miles of beaches, 47 parks and 34 golf courses
- One of the most affluent cities in Florida
- Project sits between the Congress and Yamato I-95 interchange

# SITE PLAN



## AREA DEMOGRAPHICS



### Population

**1-Mile** 7,067  
**3-Mile** 77,212  
**5-Mile** 254,382



### Daytime Population

**1-Mile** 22,931  
**3-Mile** 140,444  
**5-Mile** 339,824



### Average HH Income

**1-Mile** \$185,214  
**3-Mile** \$147,627  
**5-Mile** \$133,530



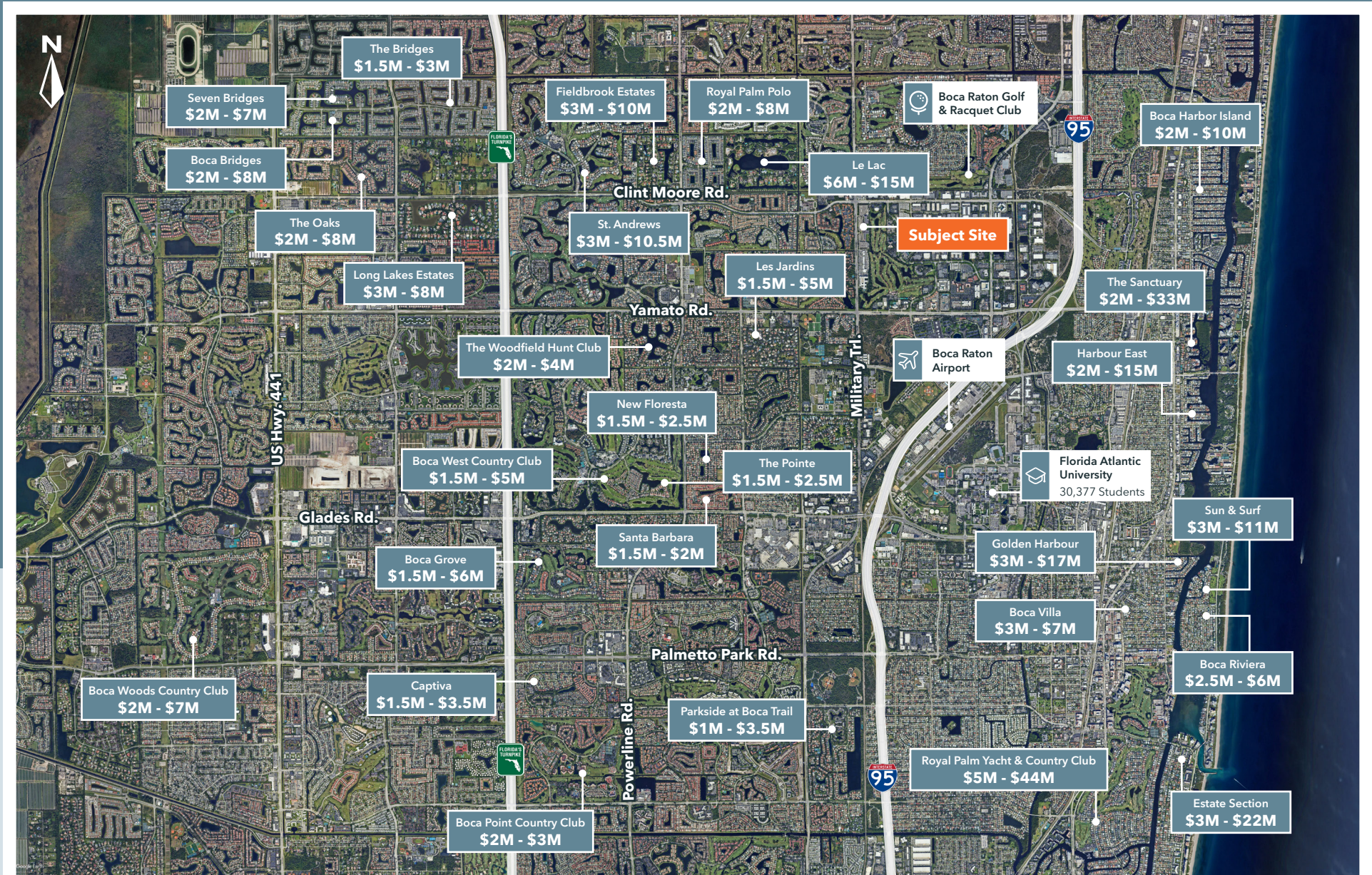
### Households

**1-Mile** 3,291  
**3-Mile** 34,412  
**5-Mile** 118,801

# MARKET AERIAL



# SURROUNDING RESIDENTIAL



# SURROUNDING OFFICE



# 6600 N. MILITARY TRAIL RETAIL AVAILABLE

6600 N. Military Trail | Boca Raton, FL



PEBB ENTERPRISES  
SINCE 1973

---

Jenny Schuemann | VP of Leasing, Senior Director  
[jschuemann@pebbent.com](mailto:jschuemann@pebbent.com) | 954.790.1514